

Madame Kaethea's House

Ptolus

ADVENTURE MAPS

Welcome to Ptolus Adventure Maps: Madame Kaethea's House. Inside you will find 13 terrain tiles detailing the three levels of this unassuming hideout nestled among the slums of the Warrens.

Madame Kaethea's House serves as a hiding place as well as a common meeting point for dark elves in the city. Located beneath this building is a secret temple to the Mistress of Spiders and a connection to the sprawling caverns beneath Ptolus.

Ptolus Adventure Maps feature detailed miniatures-scale map tiles of locales pulled straight from the pages of Monte Cook's Ptolus! Simply print them, trim them out, and bring the excitement of the City by the Spire to your tabletop.



PTOLUS

ADVENTURE MAPS

Madame Kaethea's House

Cartography and design

ED BOURELLE

Ptolus logo and cover pattern illustration

TODD LOCKWOOD

Ptolus created by

MONTE COOK

Editorial assistance

SUE WEINLEIN COOK



For more material on the City by the Spire visit

WWW.PTOLUS.COM

Print:

- Ptolus Adventure Maps are designed to be printed on your home printer.
- Print all the tiles or only the tiles you need - it is completely up to you.
- Each tile is offered on its own page so you can be selective and print only what you need.
- When printing, make sure that the Print to Fit Page option is clicked OFF so that the tiles will retain their one inch grid.

Trim:

- Trim out your Ptolus Adventure Maps with a sharp blade and a straight edge on a safe cutting surface.
- Where indicated, cut the tiles to the dashed line.

Connect:

- Use tape on the back of your Ptolus Adventure Maps to hold them together.
- Spray adhesive can be used to mount your tiles to a poster board.
- Mount the tiles to magnetic sheeting and trim for use on metal surfaces.

Play:

- Use miniatures or cardboard counters on your Ptolus Adventure Maps for infinite excitement.
 - Use markers to make notes and combat diagrams, you can always print more.
-

Ptolus Adventure Maps: Madam Kaethea's House ©2006 Edward Bourelle. All illustration and cartography is ©2006 Monte J. Cook and is used under license. Ptolus is a trademark owned by Monte J. Cook and is used here under license from Malhavoc Press. All rights reserved. SkeletonKey Games is a trademark owned by Edward Bourelle. All rights reserved. The reproduction or retransmission of any part of this product, without written permission of the copyright holder is expressly forbidden, except for the purpose of reviews. Permission is granted to print this material for personal use only.

Product Code: SKGPAM05

Madame Kaethea's House

Ptolus page 408 (Chapter 18) / City Map #319, L7

Ground Floor 1



Ground Floor 2



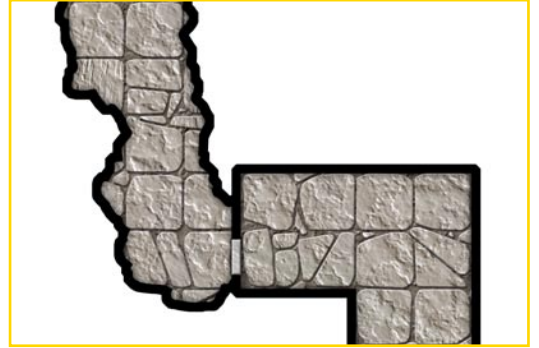
Ground Floor 2 Alt.



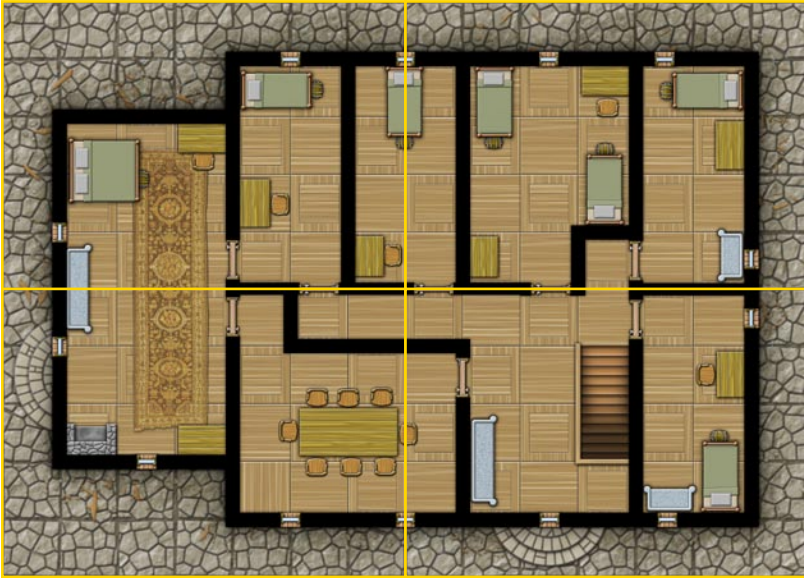
Ground Floor 3

Ground Floor 4

Temple 1 Alt.



Second Floor 1



Second Floor 2



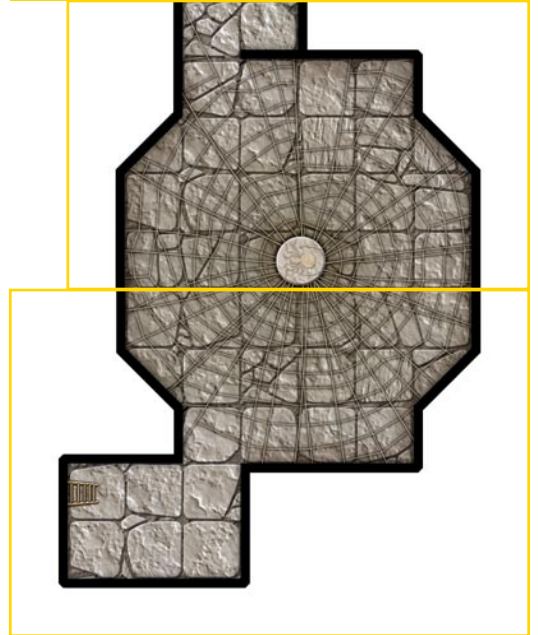
Second Floor 3

Second Floor 4

Temple 1



Temple 3



Temple 2

All artwork may be reproduced for personal use only.
Art ©2006 Monte J. Cook.

PTOLUS ADVENTURE MAPS: MADAME KAETHEA'S HOUSE

GROUND FLOOR 1



PTOLUS ADVENTURE MAPS: MADAME KAETHEA'S HOUSE

GROUND FLOOR 2



PTOLUS ADVENTURE MAPS: MADAME KAETHEA'S HOUSE

GROUND FLOOR 3



PTOLUS ADVENTURE MAPS: MADAME KAETHEA'S HOUSE

GROUND FLOOR 4



PTOLUS ADVENTURE MAPS: MADAME KAETHEA'S HOUSE

GROUND FLOOR 2 ALT.



PTOLUS ADVENTURE MAPS: MADAME KAETHEA'S HOUSE

SECOND FLOOR 1



PTOLUS ADVENTURE MAPS: MADAME KAETHEA'S HOUSE

SECOND FLOOR 2



PTOLUS ADVENTURE MAPS: MADAME KAETHEA'S HOUSE

SECOND FLOOR 3



PTOLUS ADVENTURE MAPS: MADAME KAETHEA'S HOUSE

SECOND FLOOR 4



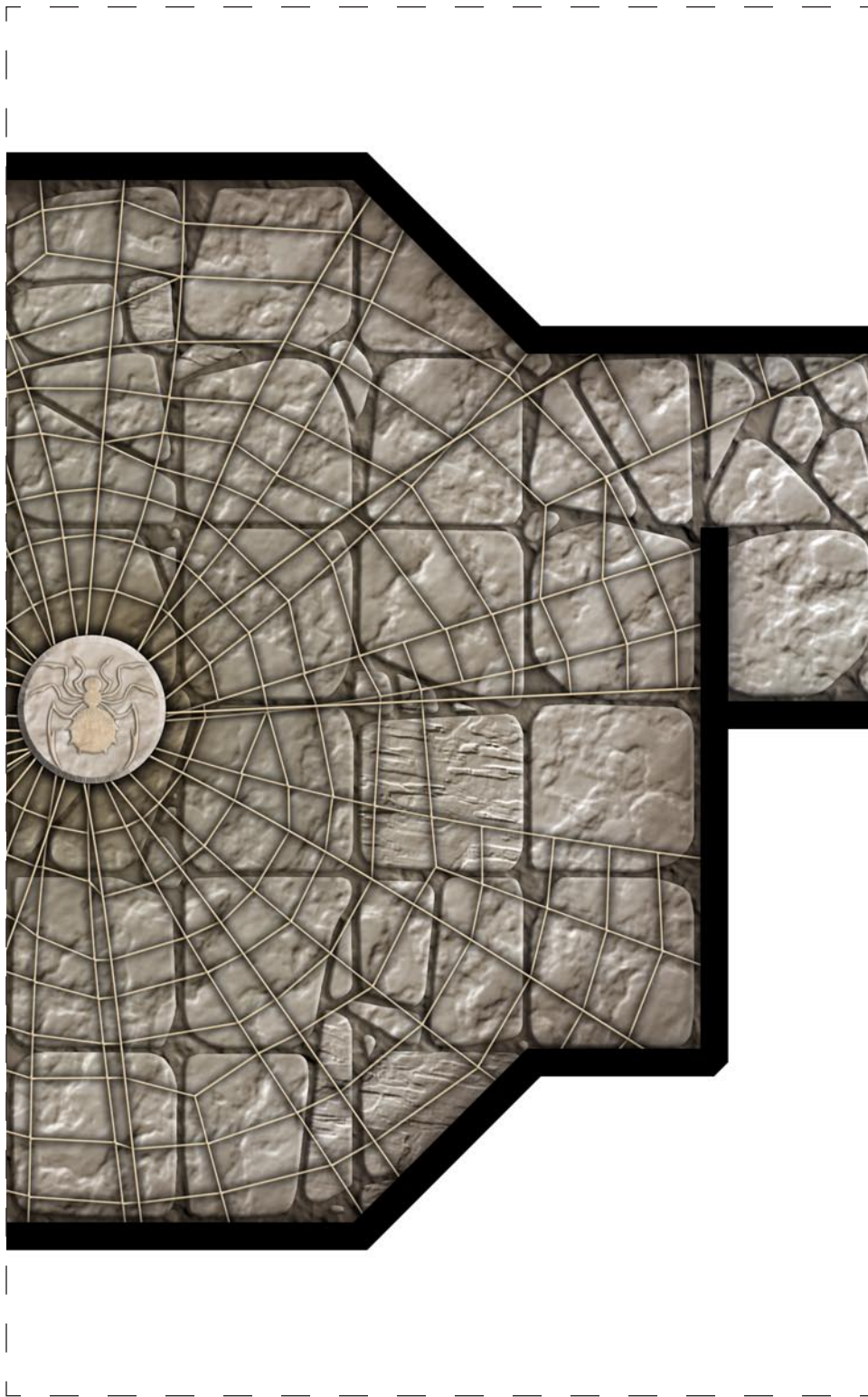
PTOLUS ADVENTURE MAPS: MADAME KAETHEA'S HOUSE

TEMPLE 1



PTOLUS ADVENTURE MAPS: MADAME KAETHEA'S HOUSE

TEMPLE 2



PTOLUS ADVENTURE MAPS: MADAME KAETHEA'S HOUSE - TEMPLE 3



PTOLUS ADVENTURE MAPS: MADAME KAETHEA'S HOUSE - TEMPLE 1 ALT.

